



EYES PROTECTION



Safety Glasses : Protection against UV radiation and ejections of solid particals.

REFERENCE:
M0-11000
M0-11001
M0-11003*

Overglasses : Polycarbonate overglasses. Protection against UV radiation and ejections of solid particals.

M0-11010
M0-11011

Face Shield: Protection against electric short-circuit arcs. Face shield adjustable on MO-182 helmet.

M0-184

HEAD PROTECTION



Face Shield
M0-186
M-881635
M-952206



Polycarbonate helmet
M0-183-BL
M0-183-RL



LED's Headlamp
MS-124



Abs helmet
M0-182/1-B
M0-182/1-R
M0-182/1-J



Helmet with built-in face shield
M0-185-BL M0-185-J
M0-185-R M0-185-B



LED's Headlamp
MS-125

INSULATING RUBBER GLOVES

Insulating Latex Gloves
Reference :
CG-05, CG-10, CG-15,
CG-20,CG-30, CG-40



Overgloves
Reference :
CG-98, CG-99



Composite gloves
Reference :
CG-02, CG-12, CG-16,
CG-22, CGL-20, CGL-30



Undergloves
Reference :
CG-80



Pneumatic Glove Tester
Reference :
CG-117



Mittens
Reference :
CG-81



INSULATING BOOTS & MATS

Insulating Boots



MV-135
MV-134

Insulating Mats



MP-42/11, MP-42/16, MP-42/66,
MP-60/03-5, MP-100/03-10,
MP-100/03-5, MP-100/03-10,
MP-60/05-5, MP-60/05-10,
MP-100/05-5, MP-100/05-10

INSULATING PLATFORMS

Insulating platforms (Indoor)

CT-7-25/1
CT-7-40/1

Insulating platforms (Indoor)

CT-7-63

Insulating platforms (Outdoor)

CT-9-25
CY-9-45
CT-9-63



ARC FLASH PROTECTIONS

Insulating Gloves
CG-11

Normex III Undergloves
CG-37

Arc-Flash Gloves
CG-65-CAL

High Visibility Arc Flash Parka
M-882082

Face Shield
M-881965, M0-182/1-B, M-87384

Jacket & Protective coverall kits

KIT-ARC-08-C, KIT-ARC-10-C
KIT-ARC-10-J, KIT-ARC-10-JP

Arc Flash Protective Kits
KIT-ARC-25-B, KIT-ARC-40-B
KIT-ARC-55-B, KIT-ARC-65-B
KIT-ARC-100-B



COLLECTIVE PROTECTIVE : CONDUCTOR INSULATION

Insulating Flexible Cover
MP-35/12, MP-35, MP-40

Insulating Flexible Cover with velcro Tape
MP-123, MP-123/1, MP-123/2

Insulating Tape
MP-37

Blanket Clamps
MP-39, MP-4110, MP-41530

Electric Adhesive Tapes
MP-19, MP-19-LOT



WORKWEAR AND OTHER PROTECTIONS

Electrical Coverall
MV-104

Dustproof equipment
M0-132

Dust Masks
M0-131/1, M0-131/2

Work Gloves
CG-96, CG-97-C

Noise reduction cover for helmet
CG-96, CG-97-C

High performance noise reduction
M0-156



Earplugs
M0-151, M0-151/100, M0-152

Safety Shoes
MV-123, MV-124

Safety Boots
MV-131

Cold Protection Kit and Cap
M0-157, M0-158



Fall arrest harness



Mechanical climbers



Anti-fall grip



Forged steel climbers



Fall arrester



Insulating stepladders



Lanyard



Standard extension ladders



Double safety descent device



safety descent device



Snap hooks



Equipped rope straps



Email us at:
sales@raahinternational.com

HEAD OFFICE - SINGAPORE
RAAH INTERNATIONAL PTE LTD UBI
Techpark #07-19 (LOBBY B) 10 UBI
Crecent, Singapore 408564
T: +65 6635 4520 F: +65 6635 4527

BRANCH OFFICE
INDONESIA
Wisma Iskandarsyah A-10, Jalan Iskan-
darsyah Raya Kavling 12-14, Jakarta
Selatan 12160

BRANCH OFFICE
MALAYSIA
C-33-2-3, Block C, Jaya One, No. 72A Jalan
Universiti, 46200 Petaling Jaya, Selangor,
D. E., Malaysia

BRANCH OFFICE
INDIA
Office No. G-15 , Sacred World Mall ,
Wanowrie, PUNE -411040, India

BRANCH OFFICE
U.S.A
Building 4 Unit #5, 2860 Ogletown
Road,
Newark DE 19713 USA

Safety Padlocks

Models With Special Symbols

- AL-230-111-EX
- AL-230-222-EX
- AL-230-S-111-EX
- AL-230-S-222-EX
- AL-230-Z-EX
- AL-230-S-Z-EX
- AL-230-111-EX
- AL-230-222-EX
- AL-240-S-111-EX
- AL-240-S-222-EX
- AL-240-Z-EX
- AL-240-S-Z-EX



Colour Models

- AL-240-B-111-EX
- AL-240-B-222-EX
- AL-240-B-Z-EX
- AL-240-B-00-EX
- AL-240-S-B-111-EX
- AL-240-S-B-222-EX
- AL-240-S-B-00-EX
- AL-240-J-111-EX
- AL-240-J-222-EX
- AL-240-J-Z-EX
- AL-240-J-00-EX
- AL-240-S-J-111-EX
- AL-240-V-00-EX
- AL-240-S-V-111-EX
- AL-240-S-J-222-EX
- AL-240-S-J-00-EX
- AL-240-V-111-EX
- AL-240-V-222-EX
- AL-240-V-Z-EX
- AL-240-S-V-222-EX
- AL-240-S-V-00-EX

Padlocks and accessories

Handle with 6 Padlocks

- AL-236-111-EX
- AL-236-222-EX
- AL-236-S-111-EX
- AL-236-S-222-EX
- AL-236-00-EX
- AL-236-S-00-EX



Handle for 10 and 30 padlocks

- AL-207/10
- AL-207/30



Multiple locking apparatus

- AL-200
- AL-202
- AL-203



Lockers and Lockout Indicators

Clipblock
Breaker
Lockers



- AL-201/1
- AL-201-C/1

Multiple
Locker



- AL-205
- AL-205/5

Warning Signs

Warning Signs

- AM-344-GB, AM-345-GB, AM-467-GB,
- AP-510-BT-GB, AM-344, AM-344/05,
- AM-49/1, AM-49/2, AM-41/1, AM-41/2,
- AM-20-GB, AP-499/1

Substation Signs

- AM-20-RM, AM-61-GB, AM-61-RM, AM-215-RM,
- AM-282/2-RM, AM-7002, AM-33/3, AM-34/2,
- AM-32/3, AP-510-GB, AP-951/2

Warning Flags

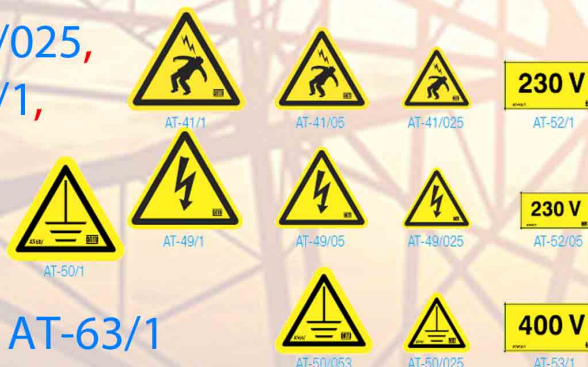
- AL-53

Grounding Flags

- AL-58, AL-60

Self Adhesive warning signs

- AT-41/025, AT-41/05, AT-41/1, AT-49/025, AT-49/1, AT-50/025,
- AT-50/053, AT-50/1, AT-51/025, AT-51/05, AT-51/1, AT-64/1,
- AT-66/1, AT-52/05, AT-52/1, AT-53/05, AT-53/1, AT-54/05,
- AT-54/1, AT-55/05, AT-55/1, AT-56/05, AT-56/1, AT-57/05,
- AT-57/1, AT-58/05, AT-58/1, AT-59/05, AT-59/1, AT-60/05,
- AT-60/1, AT-61/05, AT-61/1, AT-62/05, AT-62/1, AT-63/05, AT-63/1



Signaling and delineators

Safety Boundary Post

- AL-316, AL-318

Fixing Tools for warning Signs

- AC-21, AD-01, AC-44

Safety Adhesive Tapes

- AT-5005

Chain Delineators

- AL-31/25, AL-31/05,
- AL-32/05, AL-31

Delineators

- AT-62-A, AT-63-A,
- AT-65-A



Email us at:
sales@raahinternational.com

HEAD OFFICE - SINGAPORE
RAAH INTERNATIONAL PTE LTD UBI
Techpark #07-19 (LOBBY B) 10 UBI
Crecent, Singapore 408564
T: +65 6635 4520 F: +65 6635 4527

BRANCH OFFICE
INDONESIA
Wisma Iskandarsyah A-10, Jalan Iskan-
darsyah Raya Kavling 12-14, Jakarta
Selatan 12160

BRANCH OFFICE
MALAYSIA
C-33-2-3, Block C, Jaya One, No. 72A Jalan
Universiti, 46200 Petaling Jaya, Selangor,
D. E., Malaysia

BRANCH OFFICE
INDIA
Office No. G-15 , Sacred World Mall ,
Wanowrie, PUNE -411040, India

BRANCH OFFICE
U.S.A
Building 4 Unit #5, 2860 Ogletown
Road,
Newark DE 19713 USA

Voltage Detector

DETEX NG 917-EX & 917/2-EX
Voltage detectors and testors
MS-917-EX
MS-917/2-EX

DETEX NG 920 Voltage
Detector and Tester
MS-920-EX

Safety Test probes and Accessories

Safety Test Probe for voltage
detector use only
CX-34211
CX-35811
CX-45211
CX-45511
CX-45411

Hand Stick
M-951143

Contact probes for L.V tester
MS-8014
MS-8013

Lead set for Checks on L.V dis-
tribution board
M-952271

Voltage take-off
punch
MS-62
MS-63

Installation Controller

Differential Controllers
CATEX NG DT-170
DT-170

Grounding & continuity
measurement device
CATOHM NG DT-300
DT-300

Insulation Controller
DT-500

Testers

Phase Tester insulated
screwdriver
M0-65222

Infrared thermometer
MX-704

Phase Rotation Indicator

MS-152+

Carrying bag with stray
M-87290

Multimeters

Digital multimeter
MX-701

Digital clamp
multimeter
MX-702

Email us at:
sales@raahinternational.com

HEAD OFFICE - SINGAPORE
RAAH INTERNATIONAL PTE LTD UBI
Techpark #07-19 (LOBBY B) 10 UBI
Crecent, Singapore 408564
T: +65 6635 4520 F: +65 6635 4527

BRANCH OFFICE
INDONESIA
Wisma Iskandarsyah A-10, Jalan Iskan-
darsyah Raya Kavling 12-14, Jakarta
Selatan 12160

BRANCH OFFICE
MALAYSIA
C-33-2-3, Block C, Jaya One, No. 72A Jalan
Universiti, 46200 Petaling Jaya, Selangor,
D. E., Malaysia

BRANCH OFFICE
INDIA
Office No. G-15 , Sacred World Mall ,
Wanowrie, PUNE -411040, India

BRANCH OFFICE
U.S.A
Building 4 Unit #5, 2860 Ogletown
Road,
Newark DE 19713 USA

Overhead Bare

Short-circuiting systems



MT-404
MT-405
MT-406
MT-407

Earthing equipment for overhead lines systems



MT-242
MT-244
MT-245
MT-249

Overhead Insulating

Lowlock System

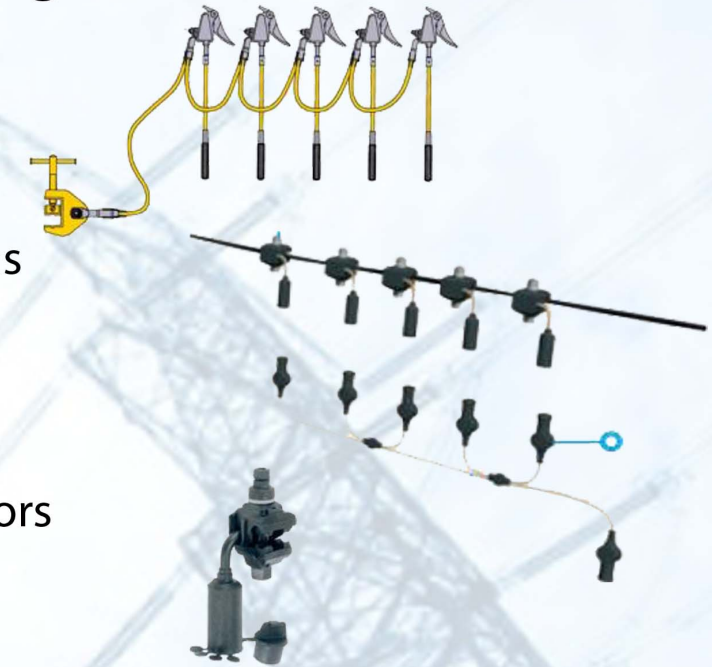
MT-615/1-7,5
MT-615/2-7,5

Short-circuiting systems

MT-205
MT-206
MT-207

Connector for conductors

MT-222
MT-223



LV Cabinets

Short Circuiting Device for LV Cabinet

MC-244/1
MC-245/1



Consumer Unit

Short-circuiting equipment

MC-296-320
MC-296-440
MC 296-440M12

Cartridge, connecting blade and jumper clamp.

M-95626/4
M-95627/4
MC-296-P
MC-296-00/08
MC-161



Connecting blades M8 or M12

MC-296-115/08
MC-296-115/12
MC-296-160/12

Email us at:
sales@raahinternational.com

HEAD OFFICE - SINGAPORE
RAAH INTERNATIONAL PTE LTD UBI
Techpark #07-19 (LOBBY B) 10 UBI
Crecent, Singapore 408564
T: +65 6635 4520 F: +65 6635 4527

BRANCH OFFICE
INDONESIA
Wisma Iskandarsyah A-10, Jalan Iskan-
darsyah Raya Kavling 12-14, Jakarta
Selatan 12160

BRANCH OFFICE
MALAYSIA
C-33-2-3, Block C, Jaya One, No. 72A Jalan
Universiti, 46200 Petaling Jaya, Selangor,
D. E., Malaysia

BRANCH OFFICE
INDIA
Office No. G-15 , Sacred World Mall ,
Wanowrie, PUNE -411040, India

BRANCH OFFICE
U.S.A
Building 4 Unit #5, 2860 Ogletown
Road,
Newark DE 19713 USA



Insulated Tools

Pliers



Spanners



Screwdrivers



Ratchet cable Cutters



Cable Cutters



Wrenches



Tool Sets

Low voltage complete set. Complete equipment for live line interventions



M0-510-03-EX

Intervention kit for electricians



M0-38510

Jumper Clamps, Cables and accessories

Mini jumper clamps



Shunt Telescopic Probe



Jumper Cables



Jumper connecting box with fuse



Threaded Adapter



Cover-up equipment

Insulator cover



Insulating Tape



Conductor insulating end - cap



Insulating flexible cover



Blanket Clamps



Insulating Sticks

Wire-cutter Stick



MG-116-S, MG-117-S

Universal hand stick



MG-125-K

Hook Stick



MG-130, MG-131

Cable Identifier

Cable identifier

MX-400



Email us at:
sales@raahinternational.com

HEAD OFFICE - SINGAPORE
RAAH INTERNATIONAL PTE LTD UBI
Techpark #07-19 (LOBBY B) 10 UBI
Crecent, Singapore 408564
T: +65 6635 4520 F: +65 6635 4527

BRANCH OFFICE
INDONESIA
Wisma Iskandarsyah A-10, Jalan Iskandarsyah Raya Kavling 12-14, Jakarta Selatan 12160

BRANCH OFFICE
MALAYSIA
C-33-2-3, Block C, Jaya One, No. 72A Jalan Universiti, 46200 Petaling Jaya, Selangor, D. E., Malaysia

BRANCH OFFICE
INDIA
Office No. G-15 , Sacred World Mall , Wanowrie, PUNE -411040, India

BRANCH OFFICE
U.S.A
Building 4 Unit #5, 2860 Ogletown Road, Newark DE 19713 USA



Substation Equipment

Intervention Kits
KIT-01, KIT-02, KIT-03

Voltage detectors and short-circuiting systems for substations with bare conductors

* IEC electronic Voltage Detectors, "Compact serie" for indoor and outdoor use
CC-875-10/36, CC-875-11/33



* IEC Insulating stick for Voltage Detector
CE-4-21-C



Voltage Detectors

* Voltage detector with leds for indoor use without batteries

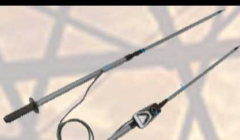


* Voltage detector with leds for indoor use (Compact serie) without batteries



Phase comparators

* Two-pole phase comparators for indoor use



* Operating Testers



Extra Safety equipments

* Safety lamps



* Aperture Housing

* Maneuvering & rescue sticks

Two-pole phase comparator and permanent indicator

* Two-pole phase comparator for indoor and outdoor use
CL-5-36 / CL-5-03



* Permanent luminous indicator for indoor use
CL-40010



IEC short-circuiting and earthing systems for MV substations

* Installation on permanent fixed points



* Earth clamps

* Installation on bare conductors



Voltage tester for M.V seperable connectors



Clamps for MV installations and substations

Clamps for installation on bare conductors



Earth clamps



Short-circuiting and earthing systems (installations)

NORMAFIX™ access points and clamps for placement on permanently installed fixed points



* Insulating sticks for substation use

* Standard sticks

* Sticks with skirts

* Short length stick

VPIS & VDS systems for M.V Cubicles

* Integrated voltage presence Systems

* Integrated voltage detecting System

* Sound phase comparator

* Interface for integrated voltage detecting system

* Seperable voltage detecting system



Email us at:
sales@raahinternational.com

HEAD OFFICE - SINGAPORE
RAAH INTERNATIONAL PTE LTD UBI
Techpark #07-19 (LOBBY B) 10 UBI
Crecent, Singapore 408564
T: +65 6635 4520 F: +65 6635 4527

BRANCH OFFICE
INDONESIA
Wisma Iskandarsyah A-10, Jalan Iskan-
darsyah Raya Kavling 12-14, Jakarta
Selatan 12160

BRANCH OFFICE
MALAYSIA
C-33-2-3, Block C, Jaya One, No. 72A Jalan
Universiti, 46200 Petaling Jaya, Selangor,
D. E., Malaysia

BRANCH OFFICE
INDIA
Office No. G-15 , Sacred World Mall ,
Wanowrie, PUNE -411040, India

BRANCH OFFICE
U.S.A
Building 4 Unit #5, 2860 Ogletown
Road,
Newark DE 19713 USA



IEC Voltage Detectors

IEC electronic Voltage Detectors,
"Compact IEC-61243-1 serie"



Voltage detectors

Standard electronic
voltage detector



Phase Comparators

Single pole phase comparator



Wireless phase comparator



IEC Equipment

IEC short-circuiting and
earthing systems



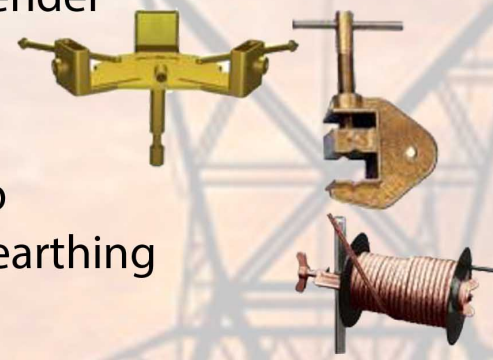
Insulating Sticks

- * Telescopic sticks for voltage detector
- * Fixed length sticks
- * Wall mounted supports
- * Insulating sticks for short-circuiting and earthing systems
- * Sticks with rain skirts, C, Kor E end-fittings



Clamps

- * Clamp dispenser heads
- * Earth Rod
- * Earth Clamp
- * Spool with earthing connection



Overhead line systems

Short-circuiting and
earthing systems



Cables

Copper Cable Aluminium cables



Jumper cables realisation

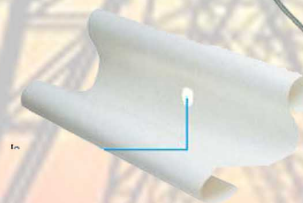


Underground Systems

Cable Testing Stick Cable Spike Equipment



Insulating blanket



Stick Accessories

- * Connection Adaptors for sticks
- * Maneuvering Hook
- * Cleaning brushes
- * Trimmer and pruning Saw
- * Fuse puller



Email us at:
sales@raahinternational.com

HEAD OFFICE - SINGAPORE
RAAH INTERNATIONAL PTE LTD UBI
Techpark #07-19 (LOBBY B) 10 UBI
Crecent, Singapore 408564
T: +65 6635 4520 F: +65 6635 4527

BRANCH OFFICE
INDONESIA
Wisma Iskandarsyah A-10, Jalan Iskan-
darsyah Raya Kavling 12-14, Jakarta
Selatan 12160

BRANCH OFFICE
MALAYSIA
C-33-2-3, Block C, Jaya One, No. 72A Jalan
Universiti, 46200 Petaling Jaya, Selangor,
D. E., Malaysia

BRANCH OFFICE
INDIA
Office No. G-15 , Sacred World Mall ,
Wanowrie, PUNE -411040, India

BRANCH OFFICE
U.S.A
Building 4 Unit #5, 2860 Ogletown
Road,
Newark DE 19713 USA



Voltage detectors

Ac voltage detector



Insulating sticks

Insulating sticks for maneuvering detectors & short-circuiting and earthing systems



Clamps

HV and EHV clamps manoeuvrable by insulating stick



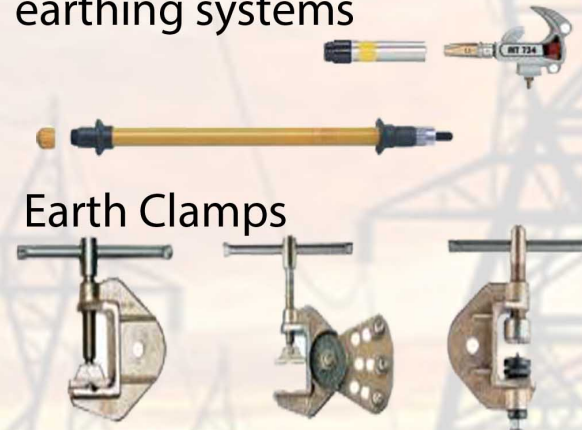
Earthing system "APE"

Earthing system with clamp interlocking



Insulating sticks and earth clamps

Insulating sticks for short circuiting and earthing systems



Copper and aluminium cables

Equipotential Lines



Copper cables



Aluminium cables



Adjustable access points

Earthing kit support

Rope operated clamp

Wire Gun Tester

Accessories



Email us at:

sales@raahinternational.com

HEAD OFFICE - SINGAPORE
RAAH INTERNATIONAL PTE LTD UBI
Techpark #07-19 (LOBBY B) 10 UBI
Crecent, Singapore 408564
T: +65 6635 4520 F: +65 6635 4527

BRANCH OFFICE
INDONESIA
Wisma Iskandarsyah A-10, Jalan Iskandarsyah Raya Kavling 12-14, Jakarta Selatan 12160

BRANCH OFFICE
MALAYSIA
C-33-2-3, Block C, Jaya One, No. 72A Jalan Universiti, 46200 Petaling Jaya, Selangor, D. E., Malaysia

BRANCH OFFICE
INDIA
Office No. G-15 , Sacred World Mall ,
Wanowrie, PUNE -411040, India

BRANCH OFFICE
U.S.A
Building 4 Unit #5, 2860 Ogletown
Road,
Newark DE 19713 USA

EARTHING CONNECTIONS

Earth Rods

Stainless steel earth rods



Copper/steel (350 μ coating) earth rods



Connectors and earth tester

Connectors

Earthing Clip



Earth Resistance tester



Accessories



EXPLOSIVE ATMOSPHERE

Atex Lights

Intrinsically safe
ATEX LED's
Headlamp



Torches for explosive
atmosphere (ATEX)



Safety shunt and accessories

Earthing Coil



TENSIONING EQUIPMENT

Handling and uncoiling blocks, Tensioning equipment, Hoist ratchet and guying equipment

Uncoiling block



Come-along



Insulating
running-block



Adjustment "Come-along"



Pulling cable clip



"TIRVIT" mechanical
adjusters



Dynamometer for
Insulated conductor



Parallel jaws "Come-along"



Pulling cable clip



Hoist ratchet



Opening block



Tensioning block



Email us at:
sales@raahinternational.com

HEAD OFFICE - SINGAPORE
RAAH INTERNATIONAL PTE LTD UBI
Techpark #07-19 (LOBBY B) 10 UBI
Crecent, Singapore 408564
T: +65 6635 4520 F: +65 6635 4527

BRANCH OFFICE
INDONESIA
Wisma Iskandarsyah A-10, Jalan Iskan-
darsyah Raya Kavling 12-14, Jakarta
Selatan 12160

BRANCH OFFICE
MALAYSIA
C-33-2-3, Block C, Jaya One, No. 72A Jalan
Universiti, 46200 Petaling Jaya, Selangor,
D. E., Malaysia

BRANCH OFFICE
INDIA
Office No. G-15, Sacred World Mall,
Wanowrie, PUNE -411040, India

BRANCH OFFICE
U.S.A
Building 4 Unit #5, 2860 Ogletown
Road,
Newark DE 19713 USA